

A 3D illustration of a plant cell. The cell wall is a light blue, textured surface. Inside, there are several organelles: a large, green, oval-shaped chloroplast with internal structures; a smaller, blue, oval-shaped chloroplast; a large, purple, oval-shaped vacuole; a yellow, cylindrical, ribbed structure (mitochondrion); and a smaller, yellow, cylindrical, ribbed structure. The background is a soft, light blue and purple gradient.

BioFlix Animations Tour Of A Plant Cell Slide Show

Copyright © 2007 Pearson Education, Inc.,
publishing as Pearson Benjamin Cummings

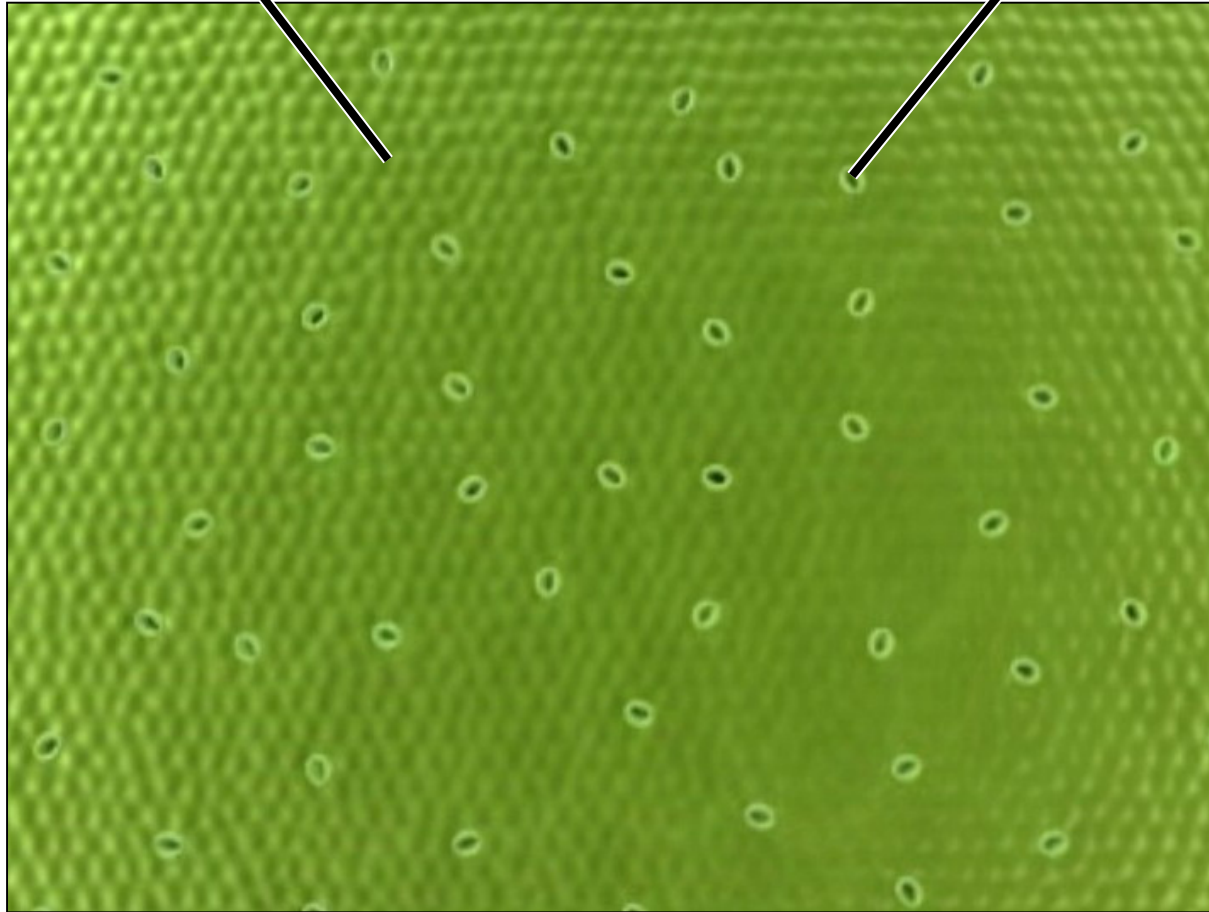






Underside of leaf

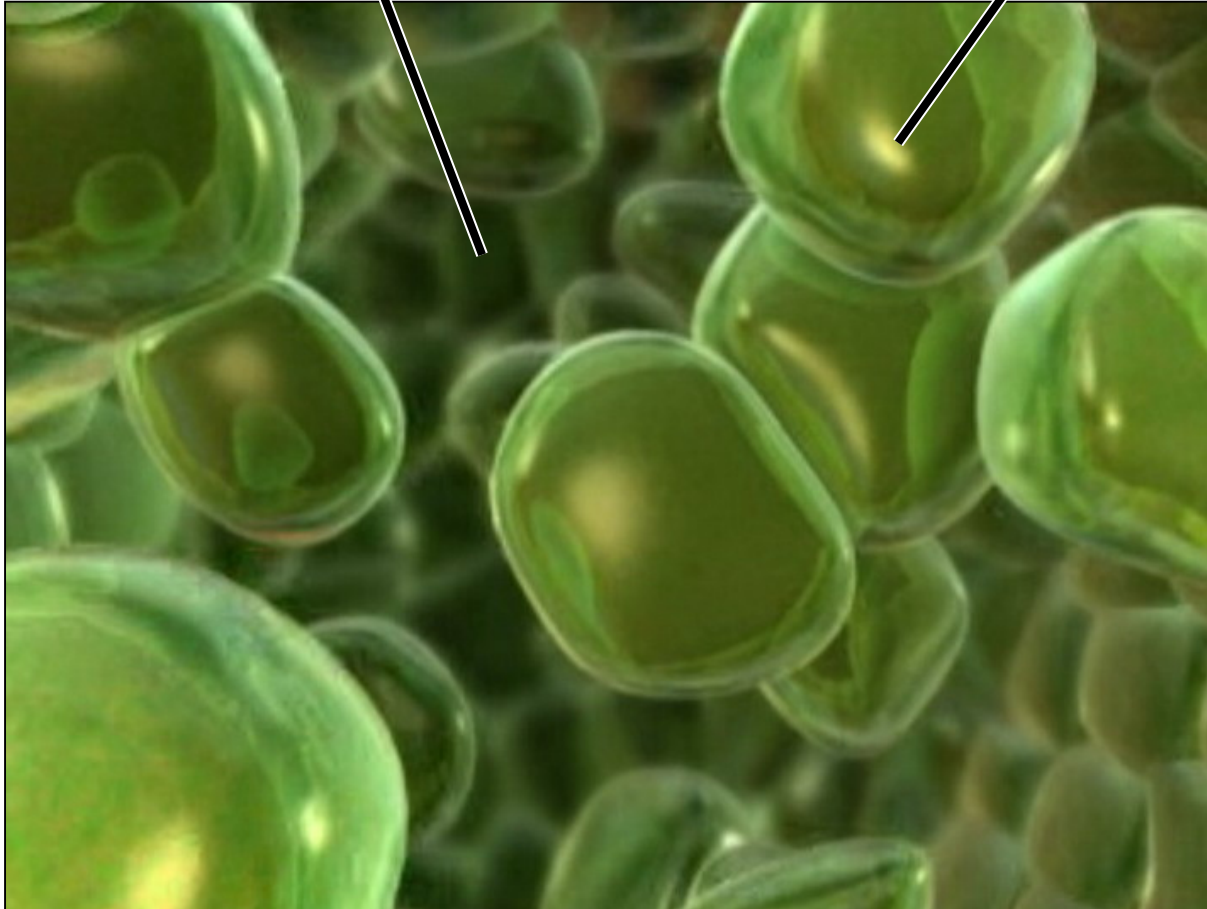
Stoma



Cell Wall

Interior of leaf

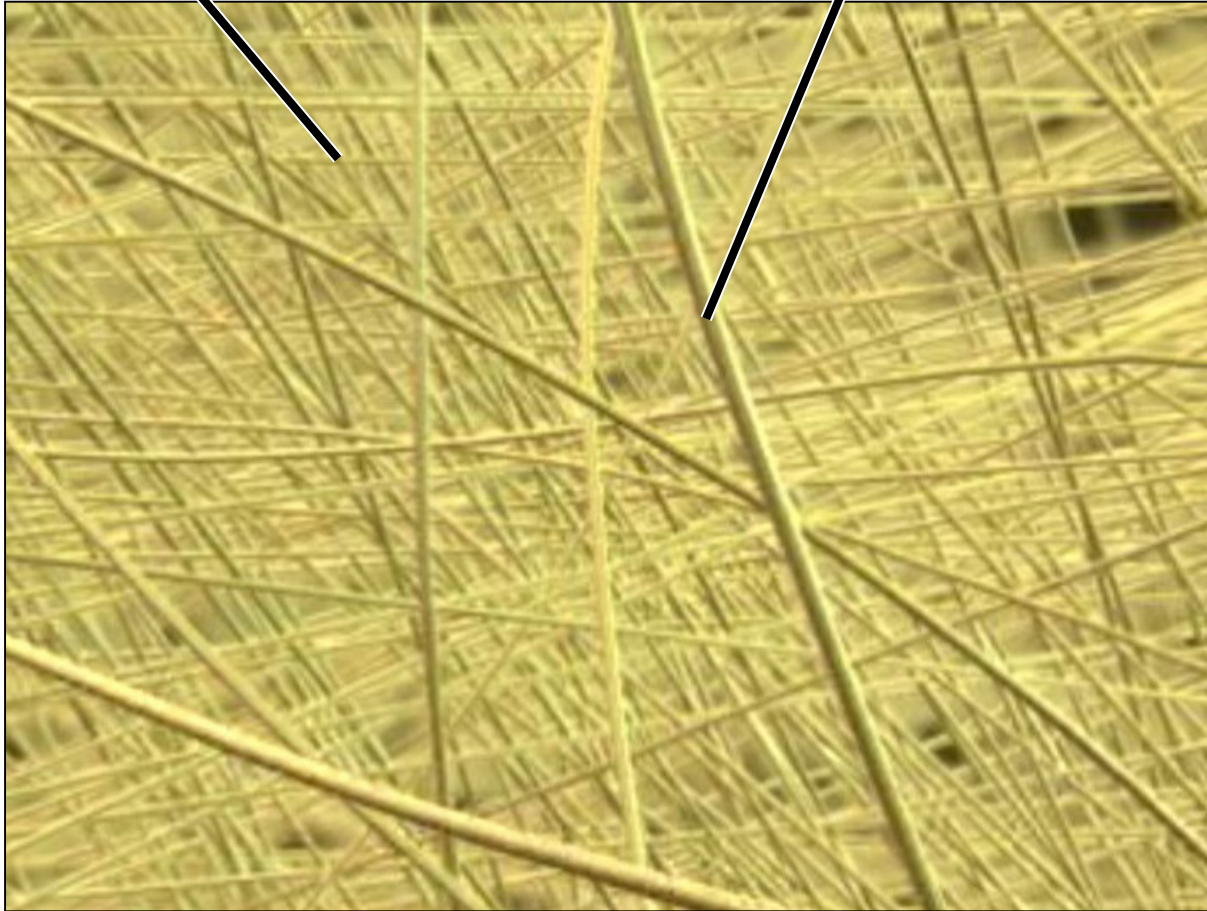
Plant cell





Cell wall

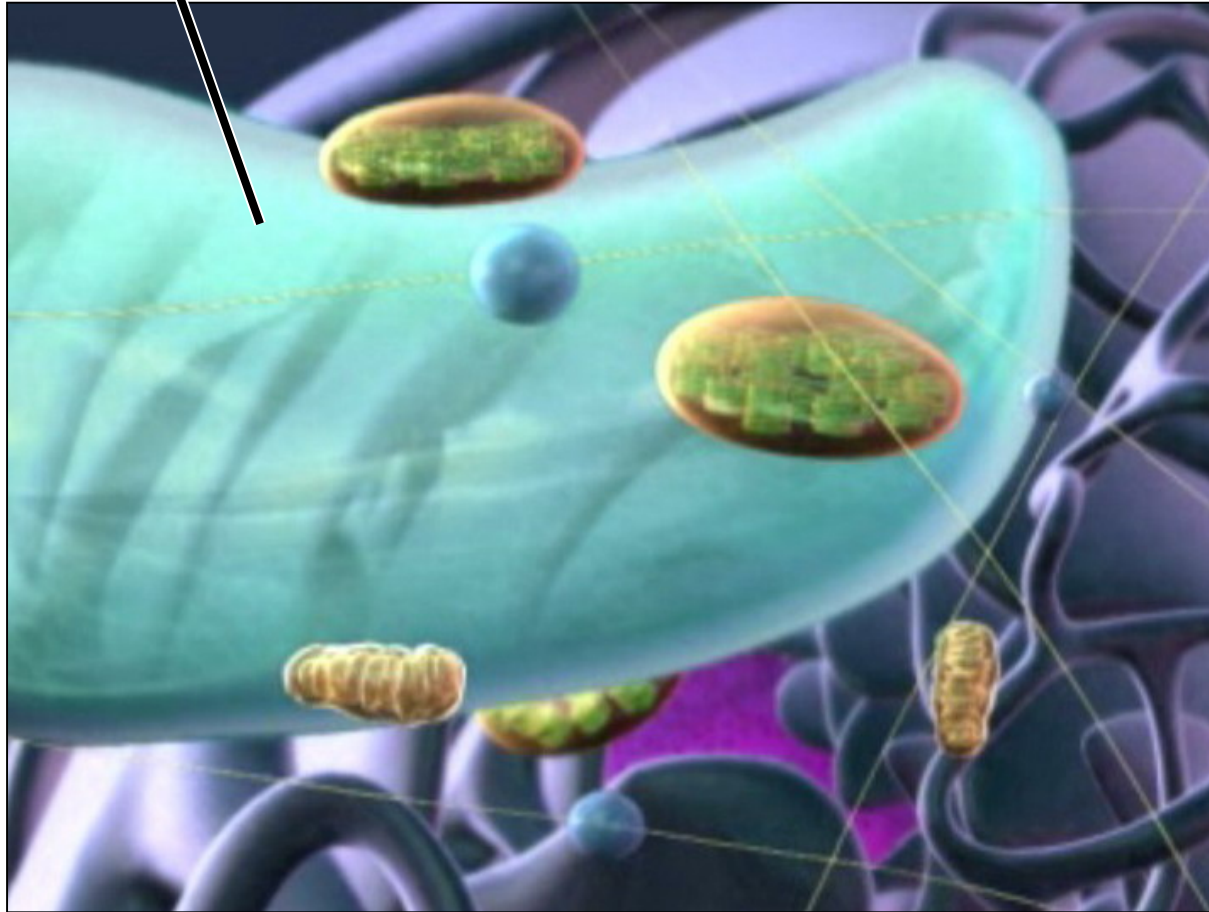
Cellulose fibril



Central Vacuole



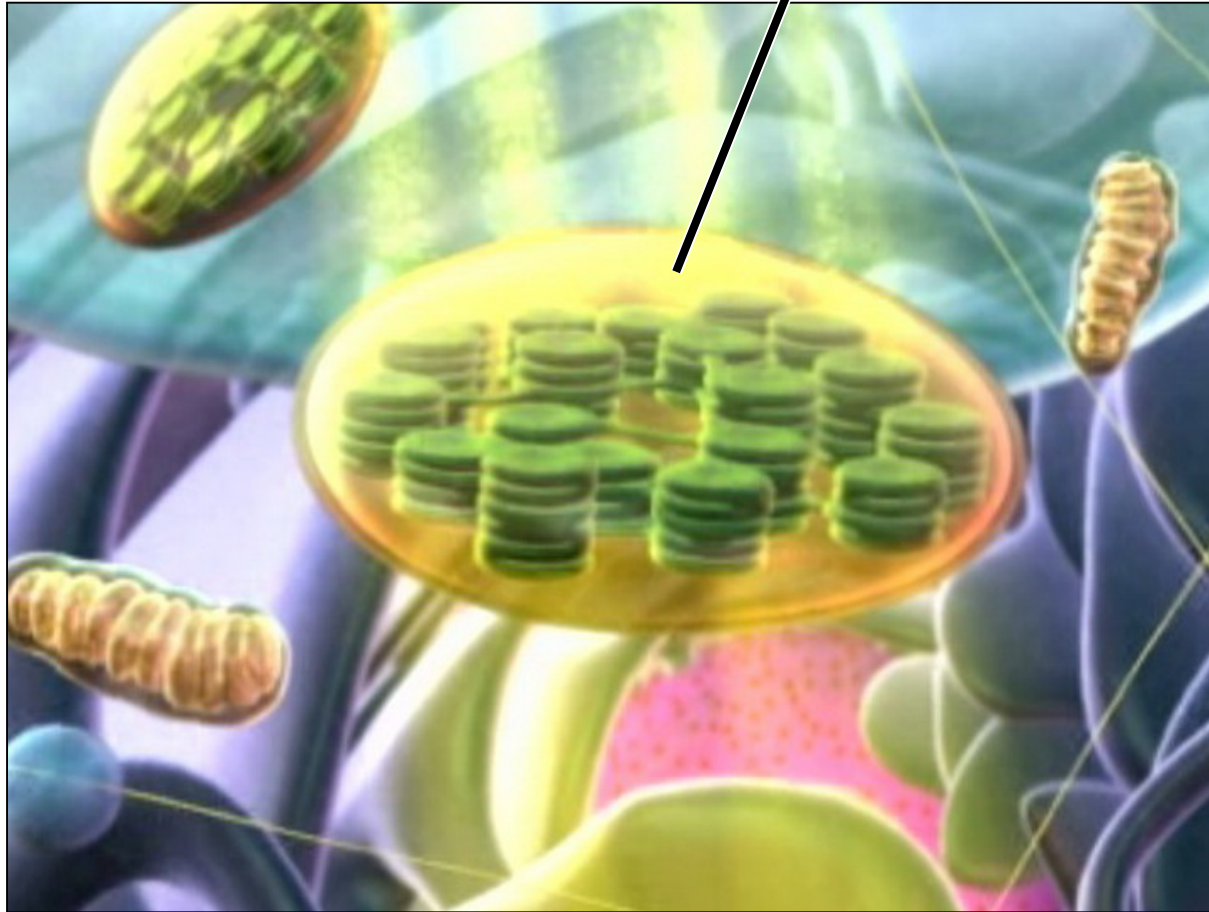
Central vacuole



Chloroplasts



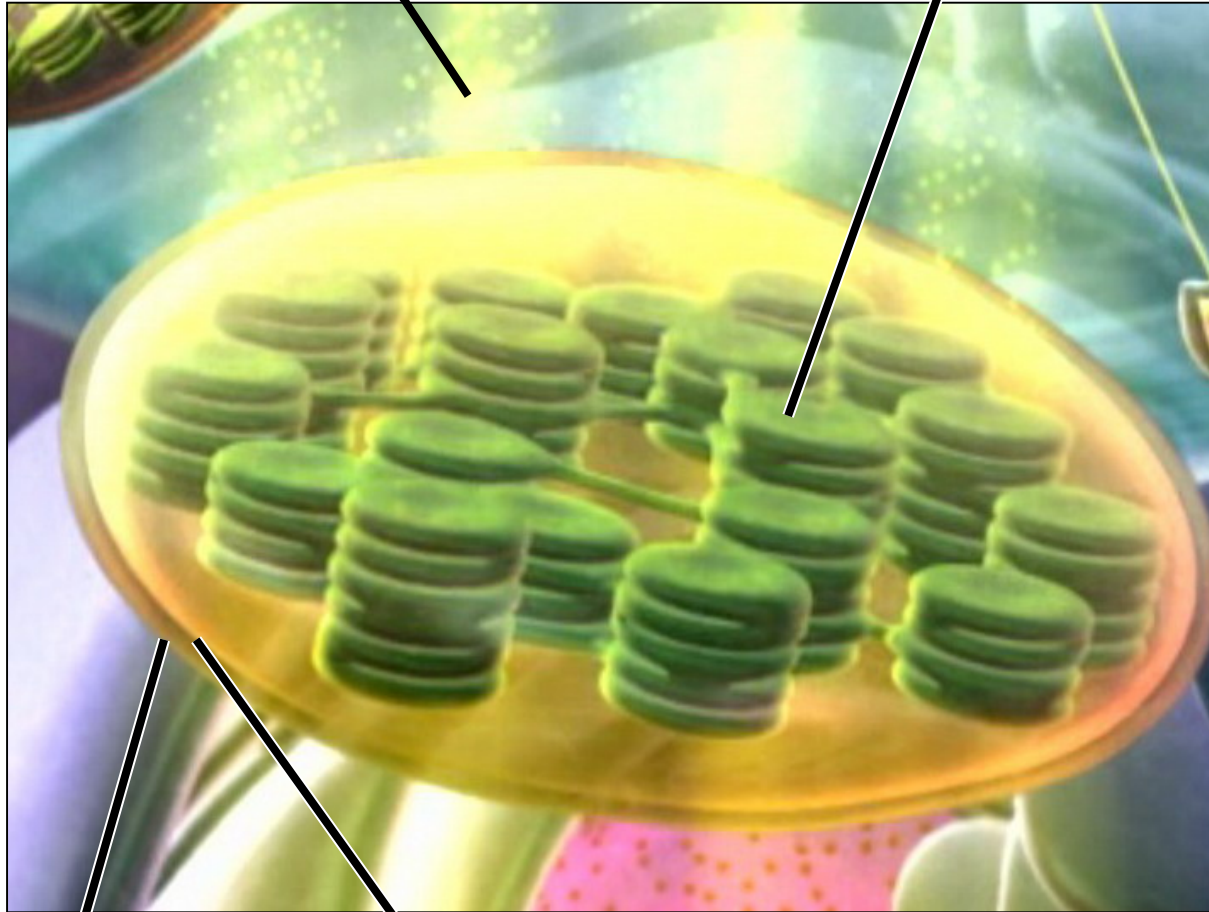
Chloroplast





Light

Green disks

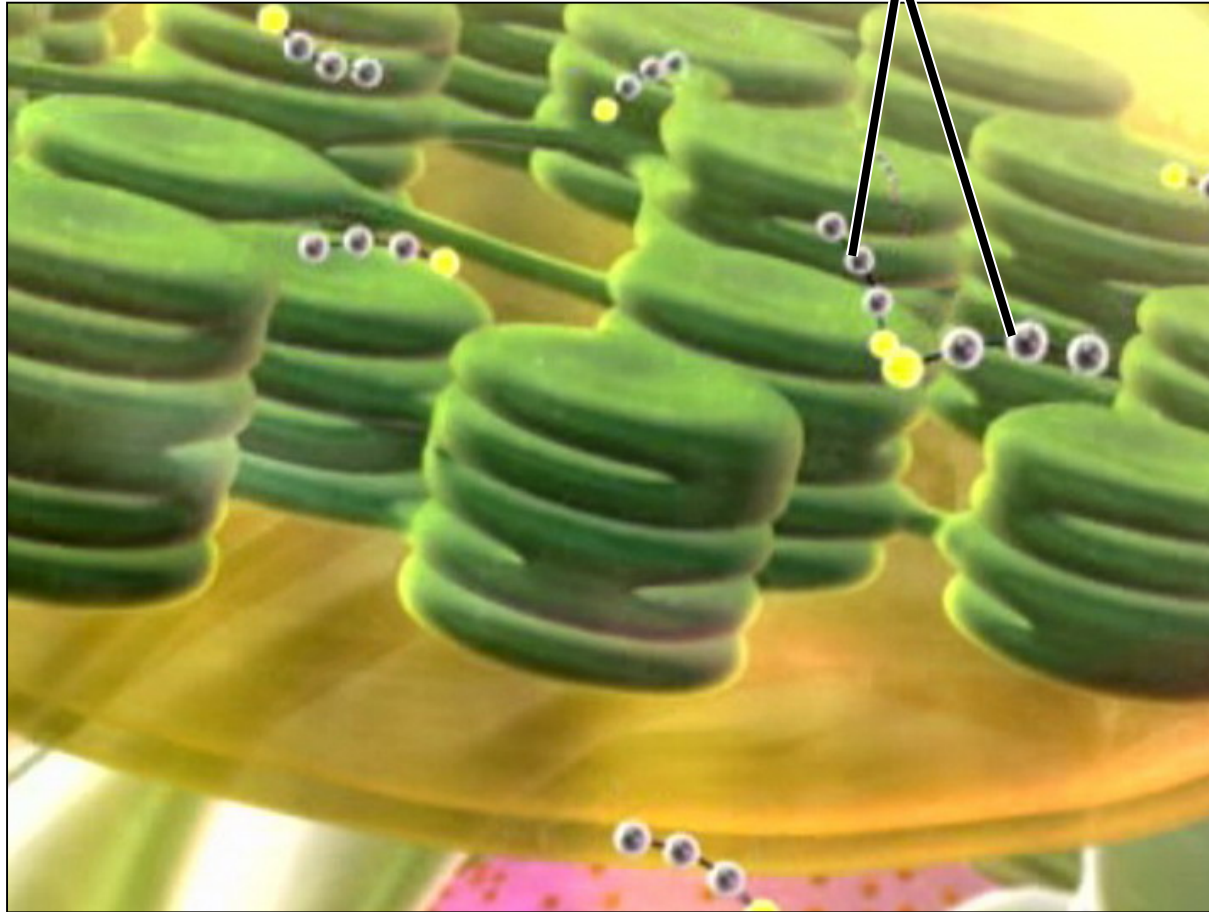


Outer membrane
of chloroplast

Inner membrane
of chloroplast



Sugar molecules



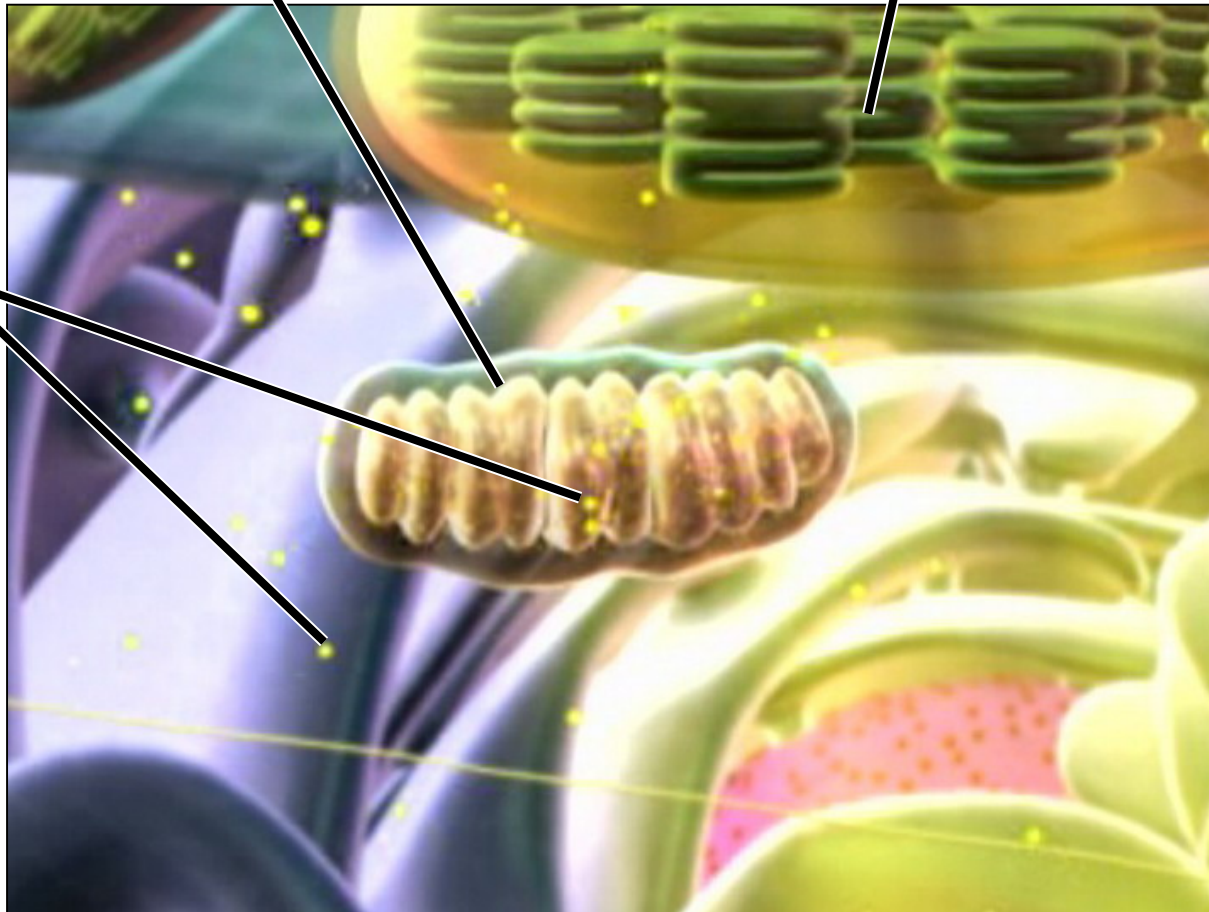
Mitochondria



Mitochondrion

Chloroplast

ATP









Copyright © 2007 Pearson Education, Inc., publishing as Pearson Benjamin Cummings